

Blockout & Lock-in Devices

Physical solution to prevent unintended network access

Benefits

- Prevent unauthorized access to physical assets
- Applications for data, copper and fiber connectors
- Decrease incidents of accidental / unintended removal
- Quick identification with color coordination
- Prevent damage to jacks, adapters and ports
- Simple installation and removal process

Product Applications

Automation Equipment

- Control Panels

Data Centers

- Cabinets
- Patch panels
- Switches/servers

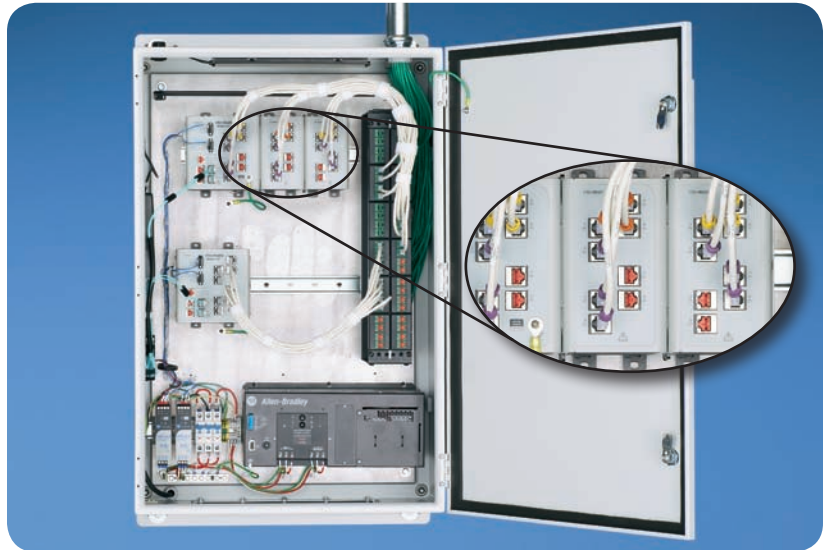
Workstations

- Wall mount faceplates
- Computers
- Voice over IP phones

Open Environments

- Lobbies & conference rooms

Surveillance Cameras



Technology can be a catalyst for innovation and help drive our ideas into reality. With all its benefits, it can also be the means of potential security threats to infiltrate a system. The more people who have access to your enterprise and plant floor systems and processes, the greater the probable risks. To help protect a system from accidental or malicious events, it is necessary to take precautions. Physical security solutions that help control access to automation devices can be effective additions to other layers of security employed in contemporary control systems.

Network accessories from Panduit offer a great place to start to secure your network components. Blockout devices inserted into unused Ethernet ports, LC and SC adapters and USB type "A" ports help prevent unauthorized access to the network infrastructure, enhancing protection of the industrial control system, workstations and overall data center. The design of the blockout device easily snaps into unused Ethernet ports and is released with the removal tool. Using different colors, it's easy to highlight ports that are restricted or designated for special purposes.

The versatile design of the lock-in device is compatible with existing Ethernet patch cords, faceplates, patch panels, Ethernet cameras and other IP devices. It is also compatible with voice over IP (VoIP) phones to help prevent unauthorized tampering with connectivity to ensure E911 continuity. Similar to blockouts, lock-in devices prevent unauthorized access to the network infrastructure helping to prevent removal of network cables from active Ethernet ports. Also, available in different colors, lock-in devices complement blockouts to help identify and protect individual network segments and the larger enterprise infrastructure.

Copper Solutions

RJ45 Plug Lock-in Device:

- Secures an RJ45 Plug into a jack
- Prevents unauthorized removal of a patch cord, VoIP phone or other network equipment
- Can be added to existing installation
- Recently expanded for all Panduit Cat5e, Cat6, & Cat6a (10Gig) cables
- Available in standard and recessed options



RJ45 Jack Blockout Device:

- Blocks unauthorized access to jack
- Resists tampering
- Available in nine colors



Data Solutions

USB Type "A" Blockout Device:

- Prevents unauthorized access to ports
- Secures the port from viruses being loaded or data from being removed



Fiber Solutions

Blockout Devices:

- Blocks unauthorized access to LC and SC adapters
- Operates as a dust plug and is "eye-safe"
- Available in multiple colors



LC Duplex Lock-In Device:

- Prevent unauthorized removal of cables
- Limit access; Opti-Core® and Keyed LC solutions



Security through Collaboration: Rockwell Automation and Panduit

As the pace of control system and enterprise network architecture convergence quickens, industrial security depends on staying both flexible and vigilant and successfully controlling as many variables as possible. What is adequate protection today must evolve as vulnerabilities are identified and new threats emerge.

Rockwell Automation has the unique capability to enhance the cyber protection of both process control and discrete control systems as they link into a larger enterprise-level system. To continue to expand the scope of a security solution for our customers, we have partnered with Panduit. They are a world-class developer and provider of leading-edge solutions that help optimize the physical infrastructure to mitigate risk. Their physical infrastructure-based solutions help enhance information security measures at the physical layer by deterring unauthorized network access and physical system changes.

By working together, you benefit from a broader, more holistic security solution that protects your enterprise and plant floor systems.

www.panduit.com

Americas:

Panduit Corp.
18900 Panduit Drive
Tinley Park, IL 60487 USA
Tel: 800.777.3300

Europe, Middle East, and Africa:

Panduit Corp.
Westgate London, W5 1XP Q
United Kingdom
Tel: 44.208.601.7200

Asia Pacific:

Panduit Corp.
60 Tuas Avenue 11, Singapore
Republic of Singapore, 639106
Tel: 65.6305.7575

www.rockwellautomation.com

Americas:

Rockwell Automation
1201 South Second Street,
Milwaukee, WI 53204-2496 USA,
Tel: (1) 414.382.2000, Fax: (1) 414.382.4444

Europe, Middle East, and Africa:

Rockwell Automation
NV, Pegasus Park, De Kleetlaan 12a
1831 Diegem, Belgium
Tel: (32) 2 663 0600, Fax: (32) 2 663 0640

Asia Pacific:

Rockwell Automation
Level 14, Core F, Cyberport 3,
100 Cyberport Road, Hong Kong,
Tel: (852) 2887 4788, Fax: (852) 2508 1846